

<b>Date</b>	<b>Kind of Meeting</b>	<b>Where Held</b>
June 18, 2012	Regular	Dothan City Board of Education, Teachers' Center, 500 Dusy Street
<b>Presiding Officer</b>	<b>Members Present</b>	<b>Members Absent</b>
Dr. Harry Wayne Parrish, Chairman	Dr. Harry Wayne Parrish, Chairman Mrs. Brenda Guilford, Vice-Chairman, District 1 Mr. Franklin Jones, District 2 Mr. Charles Woodall, District 3 Mr. Jimmy Addison, District 4 Mr. Ben Armstrong, District 5 Mr. Chris Maddox, District 6	

Dr. Harry Wayne Parrish called the meeting to order at 5:00 p.m.  
Mr. Franklin Jones led in prayer.  
Dr. Harry Wayne Parrish led the Pledge of Allegiance.

**School System News**

Mrs. Allyson Morgan stated we have Summer Bridge going on right now at our two elementary schools, Slingluff and Selma Street, at all four middle schools and at both high schools. We have approximately 550 to 600 students. At the elementary schools it is pre-k students that are rising up to Kindergarten giving them a brief two week overview of how to walk in line and be in class. It is from 8:00 to 12:00 with a meal. In the middle school it is a transition from 5<sup>th</sup> to 6<sup>th</sup> grade and they are learning about middle school and likewise at high school it is a transition from 8<sup>th</sup> to 9<sup>th</sup> grade. It is a huge success and one of the best things I think the Board offers our students because those transition periods are those trying times for those parents as well as students. It was last week and this week.

**Delegations**

There were no delegations.

**Board Comments**

There were no comments.

**Approval of Agenda and Proposed Agenda Modifications**

Mr. Tim Wilder requested the Agenda be amended to include the Personnel Addendum.

Mr. Charles Woodall made a motion seconded by Mr. Ben Armstrong to approve the Agenda and proposed Agenda modifications as presented and as recommended by the Superintendent. The motion carried unanimously. Voting was as follows: "YEA" – Jones, Woodall, Addison, Guilford, Armstrong, Maddox. "NAY" – None. "ABSTAIN" – None.

**Action Items – Adoption of Consent Agenda**

Mrs. Brenda Guilford made a motion seconded by Mr. Jimmy Addison to approve the Consent Agenda as presented and as recommended by the Superintendent. The motion carried unanimously. Voting was as follows: "YEA" – Jones, Woodall, Addison, Guilford, Armstrong, Maddox. "NAY" – None. "ABSTAIN" – None.

- Minutes for April 9, 2012 Special Called Meeting
- Monthly Financial Reports and Accounts Payable/Payroll (See below)
- Bid(s): Playground Equipment – Highlands Elementary Schools
- Approval of Sale of Mowers (7)
- Project Update(s)
- Head Start Enrollment Report for May, 2012
- Dothan City Schools Code of Student Conduct Manual (Elementary and Secondary) 2012-2013
- Approval of 2012-2013 Head Start Grant Application
- Approval of 2012-2013 Salary Schedules, Additional Administrative Salary Schedule and Supplement Schedules – Certified and Classified Employees

Mr. Ben Armstrong asked Mr. Manuel on Item I with the salary schedules is everything consistent with the current year. Mr. Mike Manuel stated yes.

**STATE OF ALABAMA  
DEPARTMENT OF EDUCATION  
LEA Financial System  
Combined Balance Sheet -- All Fund Types and Account Groups  
For Fiscal Year 2012, Fiscal Period 08**

Exhibit F-I-A

130 - Dothan City Schools

Description	GOVERNMENTAL			Capital Projects	PROPRIETARY Enterp/ Internal	FIDUCIARY Trust Agency	ACCOUNT GROUPS F/A LT Dept
	General	Special Revenue	Debt Service				
<b>Assets and Other Debits:</b>							
<b>Assets:</b>							
Cash	\$11,550,802.95	\$3,360,699.38	\$0.00	\$3,426,665.23	\$0.00	\$881,570.25	\$0.00
Investments							
Receivables	\$33,262.12	\$1,443,919.80	\$0.00	\$187,044.18	\$0.00	(\$25.02)	\$0.00
Intertund Receivables	\$0.00	\$0.00	\$0.00	\$750.00	\$0.00	\$0.00	\$0.00
Inventories	\$139,009.75	\$176,314.45	\$0.00	\$0.00	\$0.00	\$0.00	\$0.00
Other Assets	\$37,544.72	\$0.00	\$0.00	\$0.00	\$0.00	\$0.00	\$0.00
Fixed Assets	\$0.00	\$0.00	\$0.00	\$0.00	\$0.00	\$0.00	\$44,049,496.56
Construction In Progress							
<b>Other Debits:</b>							
Amounts Available							
Amounts to be Provided	\$0.00	\$0.00	\$0.00	\$0.00	\$0.00	\$0.00	\$12,470,835.80
Other Debits							
<b>Total Assets and Other Debits:</b>	<b>\$11,760,619.54</b>	<b>\$4,980,933.63</b>	<b>\$0.00</b>	<b>\$3,614,459.41</b>	<b>\$0.00</b>	<b>\$881,545.23</b>	<b>\$56,520,332.36</b>
<b>Liabilities and Fund Equity:</b>							
<b>Liabilities:</b>							
Claims Payable	\$3,254.34	\$2,527.11	\$0.00	\$0.00	\$0.00	\$128,105.12	\$0.00
Intertund Payable	\$750.00	\$0.00	\$0.00	\$0.00	\$0.00	\$0.00	\$0.00
Other Liabilities	\$973,232.50	\$837,004.60	\$0.00	\$0.00	\$0.00	\$700,841.86	\$0.00
Long-Term Liabilities	\$0.00	\$0.00	\$0.00	\$0.00	\$0.00	\$0.00	\$12,470,835.80
<b>Total Liabilities:</b>	<b>\$977,236.84</b>	<b>\$839,531.71</b>	<b>\$0.00</b>	<b>\$0.00</b>	<b>\$0.00</b>	<b>\$828,946.98</b>	<b>\$12,470,835.80</b>
<b>Fund Equity:</b>							
Investments in General Fixed Assets	\$0.00	\$0.00	\$0.00	\$0.00	\$0.00	\$0.00	\$28,606,451.87
Contributed Capital							
Reserved Fund Balance	\$138,339.00	\$176,314.45	\$0.00	\$0.00	\$0.00	\$0.00	\$0.00
Unreserved Fund Balance	\$10,622,280.54	\$3,965,087.47	\$0.00	\$3,614,459.41	\$0.00	\$52,598.25	\$0.00
<b>Total Fund Equity:</b>	<b>\$10,760,619.54</b>	<b>\$4,141,401.92</b>	<b>\$0.00</b>	<b>\$3,614,459.41</b>	<b>\$0.00</b>	<b>\$52,598.25</b>	<b>\$28,606,451.87</b>
<b>Total Liabilities and Fund Equity:</b>	<b>\$11,760,619.54</b>	<b>\$4,980,933.63</b>	<b>\$0.00</b>	<b>\$3,614,459.41</b>	<b>\$0.00</b>	<b>\$881,545.23</b>	<b>\$41,077,287.67</b>

No reconciliation information is available for this report.

6/12/2012 5:39:51 PM

Pulled from Production

Page 1 of 1

**STATE OF ALABAMA  
DEPARTMENT OF EDUCATION  
LEA Financial System  
Combined Statement of Revenues, Expenditures, and Changes in Fund Balances  
All Governmental Fund Types and Expendable Trust Funds  
For Fiscal Year 2012, Fiscal Period 08**

Exhibit F-II-A

130 - Dothan City Schools

Revenues	GOVERNMENTAL			Capital Projects	FIDUCIARY Expendable Trust	Total
	General	Special Revenue	Debt Service			
State Sources	\$29,636,514.73	\$0.00	\$0.00	\$1,730,069.59	\$0.00	\$31,366,584.32
Federal Sources	\$76,931.26	\$8,171,310.57	\$0.00	\$0.00	\$0.00	\$8,248,241.83
Local Sources	\$14,546,087.01	\$1,924,014.15	\$0.00	\$0.00	\$36,326.07	\$16,506,427.23
Other Sources	\$94,434.96	\$221,999.74	\$0.00	\$0.00	\$0.00	\$316,434.70
<b>Total Revenues:</b>	<b>\$44,353,967.96</b>	<b>\$10,317,324.46</b>	<b>\$0.00</b>	<b>\$1,730,069.59</b>	<b>\$36,326.07</b>	<b>\$56,437,688.08</b>
<b>Expenditures</b>						
Instructional Services	\$24,867,732.72	\$3,425,146.23	\$0.00	\$0.00	\$1,911.28	\$28,294,790.23
Instructional Support Services	\$6,360,335.14	\$1,688,559.46	\$0.00	\$0.00	\$12,688.07	\$8,061,582.67
Operation & Maintenance Services	\$3,233,574.46	\$73,310.74	\$0.00	\$261,726.97	\$0.00	\$3,568,612.17
Auxiliary Services	\$2,076,956.30	\$3,681,210.85	\$0.00	\$0.00	\$0.00	\$5,758,167.15
General Administrative Services	\$1,451,019.51	\$79,278.98	\$0.00	\$0.00	\$0.00	\$1,530,298.49
Capital Outlay	\$0.00	\$0.00	\$0.00	\$3,459,588.76	\$0.00	\$3,459,588.76
Debt Service	\$0.00	\$0.00	\$0.00	\$657,311.02	\$0.00	\$657,311.02
Other Expenditures	\$735,545.82	\$1,889,457.78	\$0.00	\$0.00	\$13,369.07	\$2,638,372.67
<b>Total Expenditures:</b>	<b>\$38,725,163.95</b>	<b>\$10,836,964.04</b>	<b>\$0.00</b>	<b>\$4,378,626.75</b>	<b>\$27,968.42</b>	<b>\$53,968,723.16</b>
<b>Other Fund Sources (Uses)</b>						
Other Fund Sources:	\$217,592.77	\$1,091,462.16	\$0.00	\$0.00	\$0.00	\$1,309,054.93
Other Fund Uses:	\$1,062,620.13	\$200,868.99	\$0.00	\$0.00	\$0.00	\$1,263,489.12
<b>Total Other Fund Sources (Uses):</b>	<b>(\$845,027.36)</b>	<b>\$890,593.17</b>	<b>\$0.00</b>	<b>\$0.00</b>	<b>\$0.00</b>	<b>\$45,565.81</b>
<b>Excess Revenues and Other Sources Over (Under) Expenditures and Other Fund Uses:</b>	<b>\$4,783,776.65</b>	<b>\$370,953.59</b>	<b>\$0.00</b>	<b>(\$2,648,557.16)</b>	<b>\$8,357.65</b>	<b>\$2,514,530.73</b>
<b>Beginning Fund Balance - October 1:</b>	<b>\$5,999,606.05</b>	<b>\$3,770,448.23</b>	<b>\$0.00</b>	<b>\$6,263,016.57</b>	<b>\$44,240.60</b>	<b>\$16,077,311.55</b>
<b>Ending Fund Balance:</b>	<b>\$10,783,382.70</b>	<b>\$4,141,401.92</b>	<b>\$0.00</b>	<b>\$3,614,459.41</b>	<b>\$52,598.25</b>	<b>\$18,591,842.28</b>

No reconciliation information is available for this report.

6/12/2012 5:40:46 PM

Pulled from Production

Page 1 of 1

**STATE OF ALABAMA  
DEPARTMENT OF EDUCATION  
LEA Financial System  
Combined Statement of Revenues, Expenditures, and Changes in Fund Balances  
All Governmental Fund Types and Expendable Trust Funds  
Budget and Actual  
For Fiscal Year 2012, Fiscal Period 08**

Exhibit F-III-A

130 - Dothan City Schools

Description	GENERAL		VARIANCE Favorable (Unfavorable)	SPECIAL REVENUE		VARIANCE Favorable (Unfavorable)
	Budget	Actual		Budget	Actual	
<b>Revenues</b>						
State Sources	\$44,152,071.00	\$29,636,514.73	(\$14,515,556.27)	\$1,494.00	\$0.00	(\$1,494.00)
Federal Sources	\$114,500.00	\$76,931.26	(\$37,568.74)	\$12,648,210.11	\$8,171,310.57	(\$4,476,899.54)
Local Sources	\$17,643,981.00	\$14,546,087.01	(\$3,097,893.99)	\$2,310,509.93	\$1,924,014.15	(\$386,495.78)
Other Sources	\$0.00	\$94,434.96	\$94,434.96	\$108,000.00	\$221,999.74	\$113,999.74
<b>Total Revenues:</b>	<b>\$61,910,552.00</b>	<b>\$44,353,967.96</b>	<b>(\$17,556,584.04)</b>	<b>\$15,068,214.04</b>	<b>\$10,317,324.46</b>	<b>(\$4,750,889.58)</b>
<b>Expenditures</b>						
Instructional Services	\$37,162,492.01	\$24,867,732.72	\$12,294,759.29	\$4,645,307.48	\$3,425,146.23	\$1,220,161.25
Instructional Support Services	\$9,131,091.58	\$6,360,335.14	\$2,770,756.44	\$2,182,929.95	\$1,688,559.46	\$494,370.49
Operation & Maintenance Services	\$6,008,399.32	\$3,233,574.46	\$2,774,824.86	\$48,695.90	\$73,310.74	(\$24,614.84)
Auxiliary Services	\$2,765,796.47	\$2,076,956.30	\$688,840.17	\$5,508,251.79	\$3,681,210.85	\$1,827,040.94
General Administrative Services	\$2,245,522.28	\$1,451,019.51	\$794,502.77	\$127,055.30	\$79,278.98	\$47,776.32
Special Revenue Outlay	\$1,593.00	\$0.00	\$1,593.00	\$400.00	\$0.00	\$400.00
General Service	\$13,300.00	\$0.00	\$13,300.00	\$0.00	\$0.00	\$0.00
Other Expenditures	\$1,016,303.48	\$735,545.82	\$280,757.66	\$2,665,069.56	\$1,889,457.78	\$775,611.78
<b>Total Expenditures:</b>	<b>\$58,344,498.14</b>	<b>\$38,725,163.95</b>	<b>\$19,619,334.19</b>	<b>\$15,177,709.98</b>	<b>\$10,836,964.04</b>	<b>\$4,340,745.94</b>
<b>Other Financing Sources (Uses)</b>						
Other Financing Sources:	\$413,532.38	\$217,592.77	(\$195,939.61)	\$1,357,606.45	\$1,091,462.16	(\$266,144.29)
Other Financing Uses:	\$1,307,388.99	\$1,062,620.13	\$244,768.86	\$213,671.46	\$200,868.99	\$12,802.47
<b>Total Other Financing Sources (Uses):</b>	<b>(\$893,856.61)</b>	<b>(\$845,027.36)</b>	<b>\$48,829.25</b>	<b>\$1,143,934.99</b>	<b>\$890,593.17</b>	<b>(\$253,341.82)</b>
<b>Excess Revenues and Other Sources Over (Under) Expenditures and Other Uses:</b>	<b>\$2,672,197.25</b>	<b>\$4,783,776.65</b>	<b>\$2,111,579.40</b>	<b>\$1,034,439.05</b>	<b>\$370,953.59</b>	<b>(\$663,485.46)</b>
<b>Beginning Fund Balance - Oct. 1:</b>	<b>\$5,100,470.76</b>	<b>\$5,999,606.05</b>	<b>\$899,135.29</b>	<b>\$1,291,731.79</b>	<b>\$3,770,448.23</b>	<b>\$2,478,716.54</b>
<b>Ending Fund Balance:</b>	<b>\$7,772,668.01</b>	<b>\$10,783,382.70</b>	<b>\$3,010,714.69</b>	<b>\$2,326,170.84</b>	<b>\$4,141,401.92</b>	<b>\$1,815,231.08</b>

No reconciliation information is available for this report.

6/12/2012 5:41:25 PM

Pulled from Production

Page 1 of 1

**STATE OF ALABAMA  
DEPARTMENT OF EDUCATION  
LEA Financial System**  
**Combined Statement of Revenues, Expenditures, and Changes in Fund Balances**  
**All Governmental Fund Types and Expendable Trust Funds**  
**Budget and Actual**  
**For Fiscal Year 2012, Fiscal Period 08**

Exhibit F-III-B

**130 - Dothan City Schools**

Description	DEBT SERVICE		VARIANCE Favorable (Unfavorable)	CAPITAL PROJECTS		VARIANCE Favorable (Unfavorable)
	Budget	Actual		Budget	Actual	
<b>Revenues</b>						
State Sources	\$0.00	\$0.00	\$0.00	\$2,482,568.00	\$1,730,069.59	(\$752,498.41)
Federal Sources	\$0.00	\$0.00	\$0.00	\$0.00	\$0.00	\$0.00
Local Sources	\$0.00	\$0.00	\$0.00	\$743,409.00	\$0.00	(\$743,409.00)
Other Sources	\$0.00	\$0.00	\$0.00	\$0.00	\$0.00	\$0.00
<b>Total Revenues:</b>	<b>\$0.00</b>	<b>\$0.00</b>	<b>\$0.00</b>	<b>\$3,225,977.00</b>	<b>\$1,730,069.59</b>	<b>(\$1,495,907.41)</b>
<b>Expenditures</b>						
Instructional Services	\$0.00	\$0.00	\$0.00	\$0.00	\$0.00	\$0.00
Instructional Support Services	\$0.00	\$0.00	\$0.00	\$0.00	\$0.00	\$0.00
Operation & Maintenance Services	\$0.00	\$0.00	\$0.00	\$1,215,000.00	\$261,726.97	\$953,273.03
Auxiliary Services	\$0.00	\$0.00	\$0.00	\$0.00	\$0.00	\$0.00
Debt Administrative Services	\$0.00	\$0.00	\$0.00	\$0.00	\$0.00	\$0.00
Capital Outlay	\$0.00	\$0.00	\$0.00	\$3,000,000.00	\$3,459,588.76	(\$459,588.76)
Debt Service	\$0.00	\$0.00	\$0.00	\$1,596,697.67	\$657,311.02	\$939,386.65
Other Expenditures	\$0.00	\$0.00	\$0.00	\$0.00	\$0.00	\$0.00
<b>Total Expenditures:</b>	<b>\$0.00</b>	<b>\$0.00</b>	<b>\$0.00</b>	<b>\$5,811,697.67</b>	<b>\$4,378,626.75</b>	<b>\$1,433,070.92</b>
<b>Other Financing Sources (Uses)</b>						
Other Financing Sources:	\$0.00	\$0.00	\$0.00	\$0.00	\$0.00	\$0.00
Other Financing Uses:	\$0.00	\$0.00	\$0.00	\$0.00	\$0.00	\$0.00
<b>Total Other Financing Sources (Uses):</b>	<b>\$0.00</b>	<b>\$0.00</b>	<b>\$0.00</b>	<b>\$0.00</b>	<b>\$0.00</b>	<b>\$0.00</b>
<b>Excess Revenues and Other Sources Over (Under) Expenditures and Other Uses:</b>	<b>\$0.00</b>	<b>\$0.00</b>	<b>\$0.00</b>	<b>(\$2,585,720.67)</b>	<b>(\$2,648,557.16)</b>	<b>(\$62,836.49)</b>
<b>Beginning Fund Balance - Oct. 1:</b>	<b>\$0.00</b>	<b>\$0.00</b>	<b>\$0.00</b>	<b>\$5,667,716.34</b>	<b>\$6,263,016.57</b>	<b>\$595,300.23</b>
<b>Ending Fund Balance:</b>	<b>\$0.00</b>	<b>\$0.00</b>	<b>\$0.00</b>	<b>\$3,081,995.67</b>	<b>\$3,614,459.41</b>	<b>\$532,463.74</b>

No reconciliation information is available for this report.

6/12/2012 5:42:22 PM

Pulled from Production

Page 1 of 1  
Exhibit F-III-C

**STATE OF ALABAMA  
DEPARTMENT OF EDUCATION  
LEA Financial System**  
**Combined Statement of Revenues, Expenditures, and Changes in Fund Balances**  
**All Governmental Fund Types and Expendable Trust Funds**  
**Budget and Actual**  
**For Fiscal Year 2012, Fiscal Period 08**

**130 - Dothan City Schools**

Description	EXPENDABLE TRUST		VARIANCE Favorable (Unfavorable)	TOTAL GOVERNMENT AND FUND TYPES AND EXPENDABLE TRUST FUNDS		VARIANCE Favorable (Unfavorable)
	Budget	Actual		Budget	Actual	
<b>Revenues</b>						
State Sources	\$0.00	\$0.00	\$0.00	\$46,636,133.00	\$31,366,584.32	(\$15,269,548.68)
Federal Sources	\$0.00	\$0.00	\$0.00	\$12,762,710.11	\$9,249,241.83	(\$4,514,468.28)
Local Sources	\$5,200.00	\$36,326.07	\$31,126.07	\$20,703,089.93	\$16,506,427.23	(\$4,196,662.70)
Other Sources	\$0.00	\$0.00	\$0.00	\$108,000.00	\$316,434.70	\$208,434.70
<b>Total Revenues:</b>	<b>\$5,200.00</b>	<b>\$36,326.07</b>	<b>\$31,126.07</b>	<b>\$80,209,943.04</b>	<b>\$56,437,688.08</b>	<b>(\$23,772,254.96)</b>
<b>Expenditures</b>						
Instructional Services	\$3,567.00	\$1,911.28	\$1,655.72	\$41,811,366.49	\$28,294,790.23	\$13,516,576.26
Instructional Support Services	\$4,200.00	\$12,688.07	(\$8,488.07)	\$11,318,221.53	\$8,061,582.67	\$3,256,638.86
Operation & Maintenance Services	\$0.00	\$0.00	\$0.00	\$7,272,095.22	\$3,588,612.17	\$3,703,483.05
Auxiliary Services	\$0.00	\$0.00	\$0.00	\$8,274,048.26	\$5,758,167.15	\$2,515,881.11
Expendable Administrative Services	\$0.00	\$0.00	\$0.00	\$2,372,577.58	\$1,530,298.49	\$842,279.09
Total Outlay	\$0.00	\$0.00	\$0.00	\$3,001,993.00	\$3,459,588.76	(\$457,595.76)
Expendable Service	\$0.00	\$0.00	\$0.00	\$1,609,997.67	\$657,311.02	\$952,686.65
Other Expenditures	\$0.00	\$13,369.07	(\$13,369.07)	\$3,681,373.04	\$2,638,372.67	\$1,043,000.37
<b>Total Expenditures:</b>	<b>\$7,767.00</b>	<b>\$27,968.42</b>	<b>(\$20,201.42)</b>	<b>\$79,341,672.79</b>	<b>\$53,988,723.16</b>	<b>\$25,372,949.63</b>
<b>Other Financing Sources (Uses)</b>						
Other Financing Sources:	\$0.00	\$0.00	\$0.00	\$1,771,138.83	\$1,309,054.93	(\$462,083.90)
Other Financing Uses:	\$0.00	\$0.00	\$0.00	\$1,521,060.45	\$1,263,489.12	\$257,571.33
<b>Total Other Financing Sources (Uses):</b>	<b>\$0.00</b>	<b>\$0.00</b>	<b>\$0.00</b>	<b>\$250,078.38</b>	<b>\$45,565.81</b>	<b>(\$204,512.57)</b>
<b>Excess Revenues and Other Sources Over (Under) Expenditures and Other Uses:</b>	<b>(\$2,567.00)</b>	<b>\$8,357.65</b>	<b>\$10,924.65</b>	<b>\$1,118,348.63</b>	<b>\$2,514,530.73</b>	<b>\$1,396,182.10</b>
<b>Beginning Fund Balance - Oct. 1:</b>	<b>\$12,318.00</b>	<b>\$44,240.60</b>	<b>\$31,922.60</b>	<b>\$12,072,236.89</b>	<b>\$16,077,311.55</b>	<b>\$4,005,074.66</b>
<b>Ending Fund Balance:</b>	<b>\$9,751.00</b>	<b>\$52,598.25</b>	<b>\$42,847.25</b>	<b>\$13,190,585.52</b>	<b>\$18,591,842.28</b>	<b>\$5,401,256.76</b>

No reconciliation information is available for this report.

6/12/2012 5:43:02 PM

Pulled from Production

Page 1 of 1

Function Code	Function	Annual Budget	Year-to-Date Activity	Budget Balance	Percent of Budget	May-12 66.67%	Percentage of Budget Year Elapsed:	Unaudited - For Internal Use Only
51100	Instruction	37,266,505.18	24,867,732.72	12,398,772.46	66.73%			
52110	Attendance Services			0.00	#DIV/0!			
52120	Guidance & Counseling Services	1,307,548.05	945,380.76	361,167.29	70.82%			
52130	Testing Services	2,184.00		2,184.00	0.00%			
52140	Health Services	47,687.59	28,708.55	18,979.04	67.28%			
52170	Psychological Services	283,025.31	198,946.50	84,078.81	67.85%			
52180	Speech Pathology & Audiology Services	573,510.87	369,506.67	203,903.20	64.45%			
52190	Other Student Support Services	152,975.73	71,895.05	81,080.68	54.23%			
52210	Instructional Improvement & Cmt. Dev. Services	775,534.33	628,211.09	147,323.24	80.78%			
52215	Instructional Staff Development Services	40,897.51	23,654.21	17,243.30	57.84%			
52220	Educational Media Services	1,349,862.69	887,990.75	461,871.94	65.78%			
52300	Office of School Administrator	42,763,311.54	2,783,965.35	13,510,545.99	64.38%			
53100	Security Services		429.26	429.26	#DIV/0!			
53200	Building Services	5,736,777.31	2,860,213.38	2,776,513.93	51.64%			
53300	Grounds Services	90,976.48	79,797.81	11,178.68	87.71%			
53400	Equipment Services	276,490.73	181,857.16	94,633.57	65.79%			
53500	Other Operations and Maintenance Services	17,305.19	11,166.85	5,238.34	64.55%			
54110	Transportation - Administrative Services	186,200.12	133,361.64	52,838.48	71.63%			
54120	Regular Transportation	1,903,652.56	1,551,294.68	352,357.88	81.50%			
54130	Special Education Services	457,533.56	244,723.29	212,810.27	53.48%			
54131	Transition to Work Transportation		1,894.95	1,894.95	#DIV/0!			
54132	Special Education Transportation	2,588.00	179.09	2,408.91	6.92%			
54170	Transportation on Vehicle Maintenance Services	215,921.03	129,448.52	86,472.51	59.95%			
54184	Magnet Schools from James Sousa's Esp.		16,084.12	16,084.12	#DIV/0!			
54190	Child Nutrition			0.00	#DIV/0!			
55110	General Board of Education Services	38,662.44	23,026.59	15,635.85	58.58%			
55190	Other Board of Education Services	150,084.00	116,087.75	33,996.25	77.35%			
56210	General Executive, Administrative Services	376,864.54	218,400.89	157,863.65	58.05%			
56220	Special Area Executive Administrative Services	51,193.56	48,947.81	2,245.75	95.61%			
56310	Recall Services	392,004.13	347,512.78	44,491.35	88.65%			
56340	Warehousing and Distribution Services	42,891.11	60,240.37	18,349.26	141.12%			
56550	Other Business Support Services	364,383.90	79,138.13	285,245.77	21.71%			
56410	Information Services			0.00	#DIV/0!			
56420	Data Processing Services	448,594.33	310,085.74	138,508.59	69.17%			
56490	Staff Services	222,947.77	188,111.13	34,836.64	84.65%			
56890	Other Central Support Services	160,000.00	58,466.34	101,533.66	36.54%			
57200	Building Acquisition and Improvement	1,993.00		1,993.00	0.00%			
58800	Lease Purchase Agreements	13,400.00		13,400.00	0.00%			
59120	Community Education	60,567.00	42,420.58	17,946.42	70.17%			
59130	Extended Day/Independent Care	73,887.20	134,257.62	60,370.42	181.73%			
59140	Preschool	482,680.28	325,908.25	156,772.03	67.51%			
59800	Other Expenditures	349,859.00	332,899.38	16,959.62	95.15%			
59910	Interfund Operating Transfers Out	1,307,388.99	1,062,620.13	244,768.86	81.28%			
	Other Fund Use	1,307,388.99	1,062,620.13	244,768.86	81.28%			
	Total Expenditures and Other Fund Use	59,867,951.24	38,786,704.08	20,081,247.16	64.63%			
	IM, JCC SW							

REPORT TO DOTHAN CITY SCHOOLS BOARD OF EDUCATION  
ACCOUNTS PAYABLE AND PAYROLL  
06/06/12

DATE	BATCH	DESCRIPTION	CHECK NUMBERS	TOTAL
05/02/12	60853	AP	195980-196015	\$154,171.69
05/02/12	60855	AP	196016-196016	\$609,667.32
05/02/12	60868	AP	196017-196017	\$71.50
05/03/12	60894	AP	196018-196019	\$24.47
05/09/12	60973	AP	196020-196021	\$929,069.59
05/09/12	60984	AP	196022-196051	\$117,673.49
05/10/12	60996	AP	196052-196052	\$714.00
05/10/12	60998	AP	196053-196153	\$281,636.57
05/14/12	61068	AP	196154-196246	\$139,753.42
05/17/12	61137	AP	196247-196295	\$201,691.23
05/18/12	61153	AP	196296-196297	\$169.08
05/18/12	61159	AP	196298-196320	\$29,473.44
05/24/12	61272	AP	196321-196365	\$433,714.66
05/31/12	61349	AP	196366-196415	\$102,819.18
05/16/12	61367	AP	196416-196416	\$140,906.14
05/02/12	60882	AP VOID		(\$24.47)
05/24/12	61263	AP VOID		(\$505.13)
05/31/12	61399	AP VOID		(\$540.00)
05/02/12	60859	PAYROLL	298011-298016	\$495.27
05/07/12	60942	PAYROLL	298017-298018	\$448.35
05/31/12	61304	PAYROLL	298019-298041	\$2,377,995.44
05/31/12	61313	PAYROLL	298042-298046	\$42,623.84
05/31/12	61323	PAYROLL	298047-298048	\$638.46
05/31/12	61334	PAYROLL	298049-298050	\$566.61
04/30/12	60854	ATF		\$797,026.23
05/07/12	61335	ATF		\$129,101.91
05/02/12	61338	ATF		\$74.57
05/07/12	61339	ATF		\$65.20
05/31/12	61424	ATF		\$791,064.81
				\$7,279,810.86

The computer groups all checks and information entered into the computer by a "batch number." These batch numbers can quickly identify any or all amounts listed above.

I hereby certify that all bank statements as of May 31, 2012 have been reconciled.

*Michael Mumford*

June 7, 2012

Name

Date

Revenue Source	Funding Source	May 12 % of Budget	Revenue This Month	Revenue YTD to Date	Under/Over Budget	% of Budget
BUDGET OVERSIGHT	1110	37,973,000.00	3,164,462.00	38,556,247.00	13,266,333.00	60.88%
BUDGET ON PROPOSED CURRENT LINES	1120	5,268.00	5,268.00	5,268.00	5,268.00	100.00%
SCHOOL NURSERY PROGRAM	1220	366,450.00	38,076.00	238,532.00	112,817.00	55.67%
LEARN TO READ COORDINATOR	1231	27,218.00	3,418.00	17,744.00	9,474.00	45.15%
LEARN TO READ INITIATIVE	1236	799,044.00	51,597.00	462,362.00	246,682.00	58.07%
LEARN TO READ GRANT	1231	3,000.00	3,000.00	3,000.00	3,000.00	100.00%
LEARN TO READ SETTLEMENT	1240	10,346.00	5,492.00	41,500.00	25,008.00	60.91%
LEARN TO READ SETTLEMENT	1242	1,651,152.00	9,015.00	21,123.00	13,462.00	53.16%
LEARN TO READ SETTLEMENT	1243	14,072.00	1,096.00	4,444.00	3,447.00	57.14%
LEARN TO READ SETTLEMENT	1273	62,367.00	3,353.00	35,133.00	25,183.00	52.26%
LEARN TO READ SETTLEMENT	1276	3,000.00	3,000.00	3,000.00	3,000.00	100.00%
LEARN TO READ SETTLEMENT	1279	3,000.00	3,000.00	3,000.00	3,000.00	100.00%
LEARN TO READ SETTLEMENT	1282	3,000.00	3,000.00	3,000.00	3,000.00	100.00%
LEARN TO READ SETTLEMENT	1283	14,720.00	3,000.00	17,460.00	14,720.00	100.00%
LEARN TO READ SETTLEMENT	1288	15,214.00	3,000.00	17,968.00	17,968.00	100.00%
LEARN TO READ SETTLEMENT	1310	2,513,000.00	236,608.00	1,678,364.00	1,334,636.00	53.17%
LEARN TO READ SETTLEMENT	1410	20,144,000.00	2,474,000.00	16,739,000.00	9,344,000.00	46.41%
LEARN TO READ SETTLEMENT	1411	3,000.00	3,000.00	3,000.00	3,000.00	100.00%
LEARN TO READ SETTLEMENT	1412	2,118.00	1,697.00	4,774.00	1,981.00	60.68%
LEARN TO READ SETTLEMENT	1430	3,000.00	3,000.00	3,000.00	3,000.00	100.00%
LEARN TO READ SETTLEMENT	1710	1,042,000.00	1,042,000.00	1,042,000.00	1,042,000.00	100.00%
LEARN TO READ SETTLEMENT	1782	30,000.00	3,000.00	10,000.00	20,000.00	33.33%
LEARN TO READ SETTLEMENT	1810	4,800.00	4,800.00	4,800.00	4,800.00	100.00%
LEARN TO READ SETTLEMENT	2100	3,000.00	3,000.00	3,000.00	3,000.00	100.00%
LEARN TO READ SETTLEMENT	2200	3,000.00	3,000.00	3,000.00	3,000.00	100.00%
LEARN TO READ SETTLEMENT	2901	6,000.00	3,650.00	37,650.00	27,650.00	57.50%
LEARN TO READ SETTLEMENT	3100	4,500.00	4,500.00	4,500.00	4,500.00	100.00%
LEARN TO READ SETTLEMENT	3810	48,000.00	9,300.00	18,400.00	16,470.00	34.31%
LEARN TO READ SETTLEMENT	5940	41,000.00	3,450.00	24,950.00	14,048.00	34.26%
LEARN TO READ SETTLEMENT	6010	3,000,000.00	453,300.00	7,499,300.00	7,499,300.00	100.00%
LEARN TO READ SETTLEMENT	6090	3,000.00	3,000.00	3,000.00	3,000.00	100.00%
LEARN TO READ SETTLEMENT	6091	3,000.00	3,000.00	3,000.00	3,000.00	100.00%
LEARN TO READ SETTLEMENT	6100	3,000.00	3,000.00	3,000.00	3,000.00	100.00%
LEARN TO READ SETTLEMENT	6101	3,000.00	3,000.00	3,000.00	3,000.00	100.00%
LEARN TO READ SETTLEMENT	6102	3,000.00	3,000.00	3,000.00	3,000.00	100.00%
LEARN TO READ SETTLEMENT	6103	3,000.00	3,000.00	3,000.00	3,000.00	100.00%
LEARN TO READ SETTLEMENT	6104	3,000.00	3,000.00	3,000.00	3,000.00	100.00%
LEARN TO READ SETTLEMENT	6105	3,000.00	3,000.00	3,000.00	3,000.00	100.00%
LEARN TO READ SETTLEMENT	6106	3,000.00	3,000.00	3,000.00	3,000.00	100.00%
LEARN TO READ SETTLEMENT	6107	3,000.00	3,000.00	3,000.00	3,000.00	100.00%
LEARN TO READ SETTLEMENT	6108	3,000.00	3,000.00	3,000.00	3,000.00	100.00%
LEARN TO READ SETTLEMENT	6109	3,000.00	3,000.00	3,000.00	3,000.00	100.00%
LEARN TO READ SETTLEMENT	6110	3,000.00	3,000.00	3,000.00	3,000.00	100.00%
LEARN TO READ SETTLEMENT	6111	3,000.00	3,000.00	3,000.00	3,000.00	100.00%
LEARN TO READ SETTLEMENT	6112	3,000.00	3,000.00	3,000.00	3,000.00	100.00%
LEARN TO READ SETTLEMENT	6113	3,000.00	3,000.00	3,000.00	3,000.00	100.00%
LEARN TO READ SETTLEMENT	6114	3,000.00	3,000.00	3,000.00	3,000.00	100.00%
LEARN TO READ SETTLEMENT	6115	3,000.00	3,000.00	3,000.00	3,000.00	100.00%
LEARN TO READ SETTLEMENT	6116	3,000.00	3,000.00	3,000.00	3,000.00	100.00%
LEARN TO READ SETTLEMENT	6117	3,000.00	3,000.00	3,000.00	3,000.00	100.00%
LEARN TO READ SETTLEMENT	6118	3,000.00	3,000.00	3,000.00	3,000.00	100.00%
LEARN TO READ SETTLEMENT	6119	3,000.00	3,000.00	3,000.00	3,000.00	100.00%
LEARN TO READ SETTLEMENT	6120	3,000.00	3,000.00	3,000.00	3,000.00	100.00%
LEARN TO READ SETTLEMENT	6121	3,000.00	3,000.00	3,000.00	3,000.00	100.00%
LEARN TO READ SETTLEMENT	6122	3,000.00	3,000.00	3,000.00	3,000.00	100.00%
LEARN TO READ SETTLEMENT	6123	3,000.00	3,000.00	3,000.00	3,000.00	100.00%
LEARN TO READ SETTLEMENT	6124	3,000.00	3,000.00	3,000.00	3,000.00	100.00%
LEARN TO READ SETTLEMENT	6125	3,000.00	3,000.00	3,000.00	3,000.00	100.00%
LEARN TO READ SETTLEMENT	6126	3,000.00	3,000.00	3,000.00	3,000.00	100.00%
LEARN TO READ SETTLEMENT	6127	3,000.00	3,000.00	3,000.00	3,000.00	100.00%
LEARN TO READ SETTLEMENT	6128	3,000.00	3,000.00	3,000.00	3,000.00	100.00%
LEARN TO READ SETTLEMENT	6129	3,000.00	3,000.00	3,000.00	3,000.00	100.00%
LEARN TO READ SETTLEMENT	6130	3,000.00	3,000.00	3,000.00	3,000.00	100.00%
LEARN TO READ SETTLEMENT	6131	3,000.00	3,000.00	3,000.00	3,000.00	100.00%
LEARN TO READ SETTLEMENT	6132	3,000.00	3,000.00	3,000.00	3,000.00	100.00%
LEARN TO READ SETTLEMENT	6133	3,000.00	3,000.00	3,000.00	3,000.00	100.00%
LEARN TO READ SETTLEMENT	6134	3,000.00	3,000.00	3,000.00	3,000.00	100.00%
LEARN TO READ SETTLEMENT	6135	3,000.00	3,000.00	3,000.00	3,000.00	100.00%
LEARN TO READ SETTLEMENT	6136	3,000.00	3,000.00	3,000.00	3,000.00	100.00%
LEARN TO READ SETTLEMENT	6137	3,000.00	3,000.00	3,000.00	3,000.00	100.00%
LEARN TO READ SETTLEMENT	6138	3,000.00	3,000.00	3,000.00	3,000.00	100.00%
LEARN TO READ SETTLEMENT	6139	3,000.00	3,000.00	3,000.00	3,000.00	100.00%
LEARN TO READ SETTLEMENT	6140	3,000.00	3,000.00	3,000.00	3,000.00	100.00%
LEARN TO READ SETTLEMENT	6141	3,000.00	3,000.00	3,000.00	3,000.00	100.00%
LEARN TO READ SETTLEMENT	6142	3,000.00	3,000.00	3,000.00	3,000.00	100.00%
LEARN TO READ SETTLEMENT	6143	3,000.00	3,000.00	3,000.00	3,000.00	100.00%
LEARN TO READ SETTLEMENT	6144	3,000.00	3,000.00	3,000.00	3,000.00	100.00%
LEARN TO READ SETTLEMENT	6145	3,000.00	3,000.00	3,000.00	3,000.00	100.00%
LEARN TO READ SETTLEMENT	6146	3,000.00	3,000.00	3,000.00	3,000.00	100.00%
LEARN TO READ SETTLEMENT	6147	3,000.00	3,000.00	3,000.00	3,000.00	100.00%
LEARN TO READ SETTLEMENT	6148	3,000.00	3,000.00	3,000.00	3,000.00	100.00%
LEARN TO READ SETTLEMENT	6149	3,000.00	3,000.00	3,000.00	3,000.00	100.00%
LEARN TO READ SETTLEMENT	6150	3,000.00	3,000.00	3,000.00	3,000.00	100.00%
LEARN TO READ SETTLEMENT	6151	3,000.00	3,000.00	3,000.00	3,000.00	100.00%
LEARN TO READ SETTLEMENT	6152	3,000.00	3,000.00	3,000.00	3,000.00	100.00%
LEARN TO READ SETTLEMENT	6153	3,000.00	3,000.00	3,000.00	3,000.00	100.00%
LEARN TO READ SETTLEMENT	6154	3,000.00	3,000.00	3,000.00	3,000.00	100.00%
LEARN TO READ SETTLEMENT	6155	3,000.00	3,000.00	3,000.00	3,000.00	100.00%
LEARN TO READ SETTLEMENT	6156	3,000.00	3,000.00	3,000.00	3,000.00	100.00%
LEARN TO READ SETTLEMENT	6157	3,000.00	3,000.00	3,000.00	3,000.00	100.00%
LEARN TO READ SETTLEMENT	6158	3,000.00	3,000.00	3,000.00	3,000.00	100.00%
LEARN TO READ SETTLEMENT	6159	3,000.00	3,000.00	3,000.00	3,000.00	100.00%
LEARN TO READ SETTLEMENT	6160	3,000.00	3,000.00	3,000.00	3,000.00	100.00%
LEARN TO READ SETTLEMENT	6161	3,000.00	3,000.00	3,000.00	3,000.00	100.00%
LEARN TO READ SETTLEMENT	6162	3,000.00	3,000.00	3,000.00	3,000.00	100.00%
LEARN TO READ SETTLEMENT	6163	3,000.00	3,000.00	3,000.00	3,000.00	100.00%
LEARN TO READ SETTLEMENT	6164	3,000.00	3,000.00	3,000.00	3,000.00	100.00%
LEARN TO READ SETTLEMENT	6165	3,000.00	3,000.00	3,000.00	3,000.00	100.00%
LEARN TO READ SETTLEMENT	6166	3,000.00	3,000.00	3,000.00	3,000.00	100.00%
LEARN TO						

2. Pam Sowell, transferring from School Counselor at Montana Magnet School and Slingluff Elementary School to School Counselor at Montana Magnet School, (Replacing Pam Sowell), effective the 2012-2013 school year
3. Sherissa Dionne Davis, transferring from Third Grade Teacher at Kelly Springs Elementary School to School Counselor at Slingluff Elementary School, (Replacing Pam Sowell), effective the 2012-2013 school year
4. Melissa Kenyon, transferring from First Grade Teacher at Grandview Elementary School to School Counselor at Grandview Elementary School, (Replacing Melissa Kenyon), effective the 2012-2013 school year
5. Celena Morris, transferring from School Counselor at Cloverdale Elementary School and Kelly Springs Elementary School to School Counselor at Kelly Springs Elementary School, (Replacing Celena Morris), effective the 2012-2013 school year
6. Donna Turner, transferring from English Language Arts Teacher at Girard Middle School to English Language Arts Teacher at Beverlye Magnet School, (Replacing Emily Zapata), effective the 2012-2013 school year
7. Chriscanita White, transferring from School Counselor at Faine Elementary School and Grandview Elementary School to School Counselor at Girard Elementary School, (Replacing Leah Oppert), effective the 2012-2013 school year
8. Toby Brascomb, transferring from Custodian (12-month) at Northview High School to Head Custodian (12-month) at Northview High School, (Replacing James Poole), effective June 19, 2012
9. Laura Stewart, transferring from First Grade Teacher at Highlands Elementary School to Counselor at Highlands Elementary School, (Replacing Wendy Anderson), effective the 2012-2013 school year

**C. ADDITIONAL OR TEMPORARY EMPLOYMENT(S):**

1. Michelle McInnis, additional temporary employment as a Graduation Coach at Dothan High School, as needed, to be paid out of City Funds, effective the summer of 2012
2. Mary Jackson, additional temporary employment as a Special Education Teacher writing IEPs, to be paid out of IDEA funds, effective the summer of 2012
3. Faye Swain, additional temporary employment as a mentor coach (19½ hours/week) in the Head Start Program, to be paid out of Head Start funds, effective July – September 2012

**D. CONDITIONAL APPOINTMENT(S):**

Name C-Certified/S-Support	Degree/College	Related Experience		Assignment	Effective Date
		School	Other		
1. Tarvarris Gilbert – C	M.S., University of West Alabama at Livingston, Alabama	0 Pending verification of 5 years school experience	0	Mathematics Teacher at Honeysuckle Middle School – Pending certification and HQ Status Report (Replacing Terri Tullis)	August 6, 2012
2. Laura Sconyers – C	M.S., Auburn University at Auburn, Alabama	0	0	Speech Language Pathologist at Kelly Springs Elementary School-Pending background clearance and certification (Replacing Lissa Van Doorn)	August 6, 2012

**E. APPOINTMENT(S):**

Name C-Certified/S-Support	Degree/College	Related Experience		Assignment	Effective Date
		School	Other		
1. Sharon Bennett – C	M.S., Troy University at Troy, Alabama	11	0	English Language Arts Teacher at Honeysuckle Middle School (Replacing Sharon Bennett)	August 6, 2012
2. Nancy Maxwell – C	Doctorate, Nova Southeastern University at Fort Lauderdale, Florida	0 Pending verification of 14 years school experience	0	Special Education Teacher at Honeysuckle Middle School (Replacing Amittia Smith)	August 6, 2012
3. Kendall Palmer – C	M.S., Troy University at Dothan, Alabama	0 Pending verification of 4½ years school experience	8	School Counselor at Cloverdale Elementary School (Replacing Celena Morris)	August 6, 2012
4. Wanda Casey – S		0 Pending verification of 8 years school experience	0	School Secretary at Morris Slingluff Elementary School (Replacing Nina Lisenby)	July 1, 2012

NOTE: Principals are in the process of interviewing for some key vacancies; therefore, we may have an addendum.

**ADDENDUM, DOTHAN CITY BOARD OF EDUCATION, Personnel Action Sheet**

TO: Board Members  
 FROM: Tim Wilder  
 DATE: June 18, 2012

I recommend approval of the following personnel items:

**A. RESIGNATION(S):**

2. Lisa Murphy, Fifth Grade Teacher at Morris Slingluff Elementary School, effective June 1, 2012

**B. TRANSFER(S):**

10. Leah Oppert, transferring from School Counselor at Heard Magnet School and Girard Elementary School to School Counselor at Heard Magnet School (replacing Leah Oppert), effective the 2012-2013 school year
11. Maria Johnson, transferring from Reading Coach at Beverlye Magnet School to Assistant Principal (10-month) at Beverlye Magnet School (replacing Connie Griggs), effective the 2012-2013 school year
12. Jeff Hatfield, transferring from Instructional Coach at Girard Middle School to Assistant Principal (10-month) at Carver Magnet School (replacing Connie Griggs), effective the 2012-2013 school year
13. Wendy Anderson, transferring from School Counselor at Highlands Elementary School and Selma Street Elementary School to School Counselor at Selma Street Elementary School (replacing Wendy Anderson), effective the 2012-2013 school year

14. Stacy Nelms, transferring from Math Teacher at Girard Middle School to Mathematics Teacher at Beverly Magnet School (replacing Whitney Greene), effective the 2012-2013 school year

D. **CONDITIONAL APPOINTMENT(S):**

Name C-Certified/S-Support	Degree/College	Related Experience		Assignment	Effective Date
		School	Other		
3. Julie Ratcliffe- C	M.S., Troy University at Dothan, Alabama	0	0	First Grade Teacher at Selma Street Elementary School – Pending certification and HQ Status Report (Replacing Arnetra Freeman)	August 6, 2012

E. **APPOINTMENT(S):**

Name C-Certified/S-Support	Degree/College	Related Experience		Assignment	Effective Date
		School	Other		
5. Lee Hall - C	M.S., Auburn University at Auburn, Alabama	0 Pending verification of 11 years school experience	0	Physical Education Teacher at Northview High School (Replacing Russell Bedingfield)	August 6, 2012
6. Anita Owens - C	B.S., Troy University at Dothan, Alabama	1	0	First Grade Teacher at Selma Street Elementary School (Replacing Anita Owens)	August 6, 2012
7. Holley Wise - C	B.S., Troy University at Dothan, Alabama	1	0	Second Grade Teacher at Selma Street Elementary School (Replacing Holley Wise)	August 6, 2012
8. Haley Newton - C	B.S., University of Alabama at Tuscaloosa, Alabama	1	0	Kindergarten Teacher at Selma Street Elementary School (Replacing Haley Newton)	August 6, 2012
9. Maryann Kirkland - C	B.S., Auburn University at Auburn, Alabama	0	0	Second Grade Teacher at Selma Street Elementary School (Replacing Sydney Arnold)	August 6, 2012

F. **PROBATIONARY CONTRACT(S):**

1. Chris Shaw, Probationary Contract Principal (12-month) at Northview High School, effective July 2, 2012 – June 30, 2013

**Superintendent Recommendations**

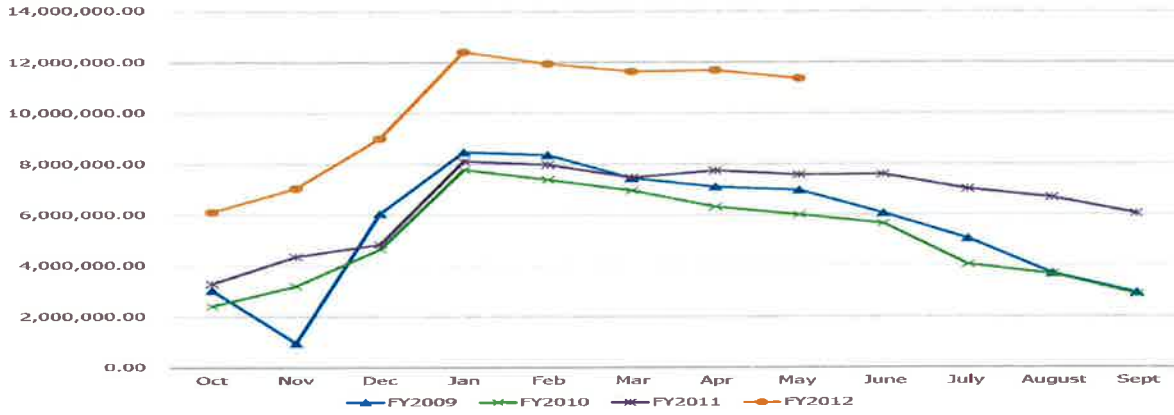
Mr. Tim Wilder stated thank you Board for being patient with us. Tonight you hired the new Principal at Northview High School who is Chris Shaw and is in the Hoover System now and will be joining us effective July 2<sup>nd</sup>. We have had three meetings with Mr. Shaw and through a committee of teachers and parents and student and the PTSO President we got the nod of approval by them as well. We are really excited about that. I appreciate the Board. I would really loved to have had somebody by now but we wanted to do it right. I know most of you have had a chance to sit down with the candidate one on one. We are real proud to have Chris on board at Northview High School and look for great things from him. As you know he was Principal of the Year in Georgia, he was Principal at Spann Park and works in the Central Office in Hoover and has seen some very successful programs and will bring some of that experience to Northview High. Also of interest I am sure is Item E.6 on your Addendum, Lee Hall is the recommendation that the Board has approved for PE at Northview High School that will have the coaching duties assigned to it and is expected to be named the baseball coach and comes very highly recommended. They also had input from the parents there in the baseball program. Coach Stewart has done a great job going out and finding the best that we could find. That is what is going to happen as we have openings we are going to get the best that we can find. Today we had interviews with the three finalists for the Dothan High position and we will be in contact with you. There was a committee also there to ask questions and get to know these candidates as well. We had great meetings today, great candidates that all have ties to Dothan High School and hopefully we will be bringing that to you very soon as well as a recommendation for the alternative school principal and Girard Middle School principal as well. Mr. Chairman, if the Board would not mind and Mr. Segrest's permission I would like to have another Board meeting as quick as we can to get these people on Board and start this ball rolling. Dr. Harry Wayne Parrish stated is next Monday night quick enough or Monday week. Mr. Jimmy Addison asked what the prospects of a morning meeting are. Mr. Tim Wilder stated with these three positions if the Board wanted to meet I do not necessarily have to be here with communication with you as long as you get the recommendation from me. I should not hold you guys and new hires up for these positions but if you want us all together. Mrs. Brenda Guilford asked what days are you going to be gone. Mr. Tim Wilder stated between that and something with my daughter at Troy that your parents have to be at next week. I can meet those days but it will have to be in the evenings. Dr. Harry Wayne Parrish asked if there is a morning next week everybody can meet. Mr. Jimmy Addison stated Wednesday is the only day I can meet early in the morning. Dr. Harry Wayne Parrish stated me too. Mr. Tim Wilder stated I will have a recommendation by Monday for those positions. Dr. Harry Wayne Parrish stated we will meet Wednesday, June 27<sup>th</sup> at 8:00 a.m. here. Mr. Tim Wilder stated the Work Shop tomorrow at 2:30 if it is okay with the Board we will meet at Dothan High School in front of the school and walk through the facilities there and we will leave from there going to Northview to walk through their athletic facilities. Depending on questions I would think no more than an hour at each school. For media purposes we are going to meet at 2:30 in front of the school and tour athletic facilities at Dothan High and then go to Northview and we will be done.

Mr. Mike Manuel gave a Budget Update reviewing the General Fund Balance Comparison, Local Revenue Comparison, General Fund Revenues, Analysis of General Fund Expenditures and General Fund Recap. (See Below)

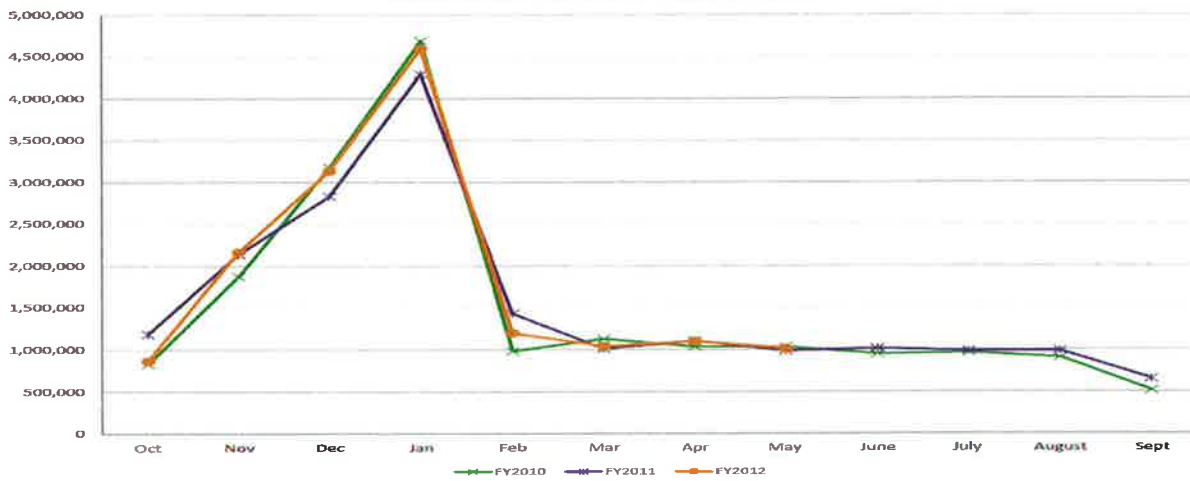
# Dothan City Schools

Financial Report Presentation  
 Board Meeting  
 June 18  
 , 2012

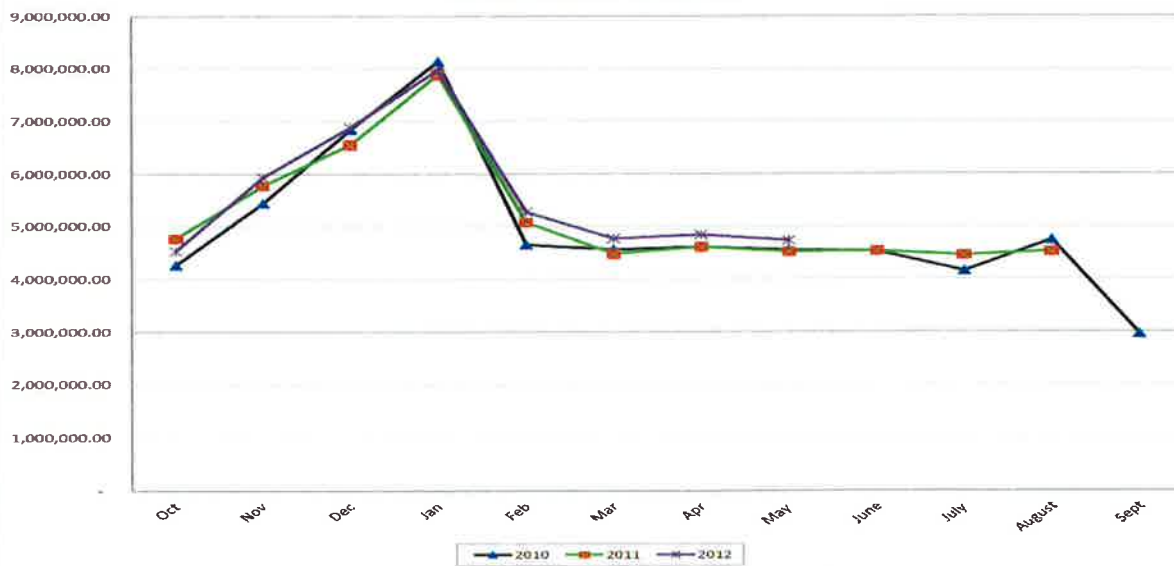
**General Fund Balance**



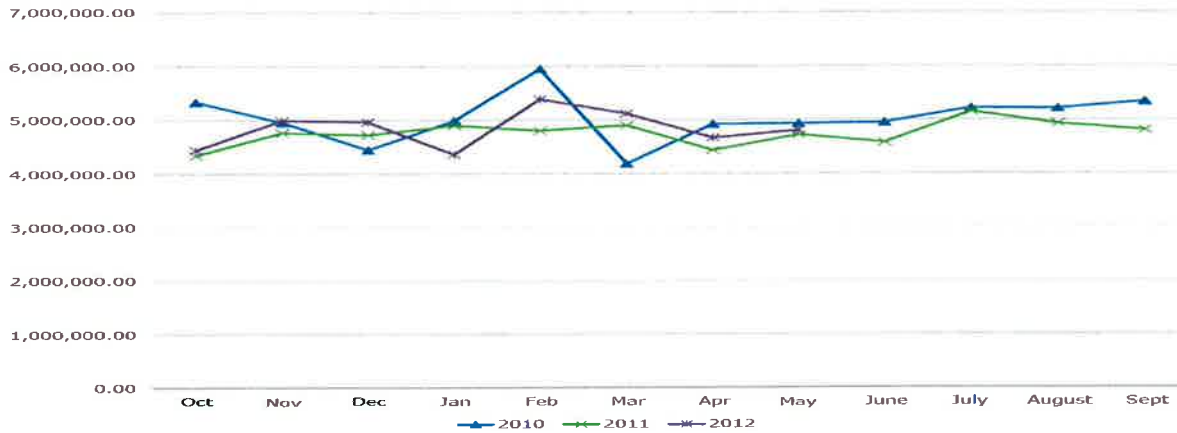
**LOCAL REVENUE COMPARISON**



**GENERAL FUND REVENUES**



**General Fund Expenditures**



<b>Beginning Fund Balance, 10/01/2011</b>	<b>\$ 5,999,606.05</b>
<b>Operating Revenues</b>	<b>\$ 44,935,424.44</b>
<b>Operating Expenditures</b>	<b>\$ (38,725,163.95)</b>
<b>Operating Excess(Deficit)</b>	<b>\$ 6,210,260.49</b>
<b>Other Fund Sources</b>	<b>\$ 217,592.77</b>
<b>Other Fund Uses</b>	<b>\$ (1,062,620.13)</b>
<b>Net Uses</b>	<b>\$ (845,027.36)</b>
<b>Net Results YTD</b>	<b>\$ 5,365,233.13</b>
<b>Ending Fund Balance 05/31/2012</b>	<b>\$ 11,364,839.18</b>
<b>Months Operating Balance</b>	<b>2.35</b>
<b>Compared to Amount at 09/30/2011</b>	<b>1.26</b>
<b>Compared to Amount at 05/31/2011</b>	<b>1.60</b>

Mr. Mike Manuel stated we are still in as good of a financial shape as we have been in many many years.

Mr. Tim Wilder stated we are still gathering information for what the Board requested. That is something we can wait on and certainly by the July meeting will get it to you.

Mr. Jimmy Addison stated I want to tell the City Commissioners that are here thank you for the money you provide for us. Mr. Manuel does a really good job taking the money you provide and spreading it and getting the most use out of that money. We certainly appreciate that money you give us. Dr. Harry Wayne Parrish stated we appreciate you coming too. People see you here and it means a lot.

Mr. Tim Wilder stated we are looking at space at Heard. There may be some space there for those on the waiting. As I said before as soon as we get space available and see that we can provide that we will let you know. We had a great Principals meeting today and discussed the alternative school and moving forward on the policies there. Allyson is convening a committee of those people to talk about how deal with this without transportation and the rules and regulations and coming and going so much with possibly so many students that will coming and going to that alternative school. We had a good long meeting today and I thought it was productive and we will be meeting regularly and have it up and running. I appreciate the Board's support and patience with these recommendations.

Dr. Harry Wayne Parrish stated I appreciate everybody for all you have done and all the work you have done for the year everybody in the central office and all the teachers and principals too. I have had so many good comments around town. I am really proud of that. A lot of people are coming at me with the positives.

Mr. Franklin Jones stated I am concerned we are going to become a savings club here. I know we need some monies in the bank and I have said this before at the expense of reducing salaries and supplements of our staff at some point in time we are going to have to consider giving some of this money back. We are just holding on to it and the possibly going to have a 1/3 more than we have this year. I just do not think we are a savings club. Dr. Harry Wayne Parrish stated very good point and to add a little bit to that I think we really need to consider all of those kinds of things and the morale of the school system people. Mr. Jones he is getting the information together for the July meeting so we will have a better understanding of some things.



**Executive Session**

Mr. Jere Segrest stated the Executive Session is for Student Hearings.

Mrs. Brenda Guilford made a motion seconded by Mr. Jimmy Addison to adjourn into Executive Session as recommended by the Superintendent. The motion carried unanimously. Voting was as follows: "YEA" – Jones, Woodall, Addison, Guilford, Armstrong, Maddox. "NAY" – None. "ABSTAIN" – None.

Mr. Jimmy Addison made a motion seconded by Mr. Franklin Jones to reconvene into Regular Session as recommended by the Superintendent. The motion carried unanimously. Voting was as follows: "YEA" – Jones, Woodall, Addison, Guilford, Armstrong, Maddox. "NAY" – None. "ABSTAIN" – None.

No action was taken in Executive Session.

Mr. Tim Wilder recommended that student number 75514 be expelled from Dothan City Schools.

Mrs. Brenda Guilford made a motion seconded by Mr. Ben Armstrong that student number 75514 be placed at P.A.S.S. Academy for one semester at the beginning of next school year and be evaluated by the Superintendent for his readmit to home base school. The motion carried unanimously. Voting was as follows: "YEA" – Jones, Woodall, Addison, Guilford, Armstrong, Maddox. "NAY" – None. "ABSTAIN" – None.

**New Business**

Dr. Harry Wayne Parrish stated the board would meet again tomorrow at 2:30 and again on Wednesday, June 27<sup>th</sup> at 8:00 AM. (See additional Board meeting dates below)

DOTHAN CITY SCHOOLS, BOARD OF EDUCATION, BOARD MEETINGS: Board Agendas are posted to the Dothan City Schools website: [www.dothan.k12.al.us](http://www.dothan.k12.al.us). On the morning of the Board meeting the Agenda will be replaced with the Board Agenda Packet (under the Agenda column). Click on Administrative Services on the right side then click on Board Meetings on the left side.

We also have the Board meeting calendar, listing Regular and Workshop meetings only, under School Calendars on the website. Regular Meetings are normally held on the 3rd Monday of each month. All meetings are scheduled for 5:00 p.m. in the Dothan City Schools' Teachers' Center, 500 Dusy Street, **unless otherwise announced**. Meeting dates are occasionally changed due to holidays or conflicts. Additional Special meetings are held as needed and are announced in local media.

Date & Time	Type & Location
7/16/2012 - 5:00 PM	Regular Meeting @ Board of Education, Teachers' Center, 500 Dusy Street
8/13/2012 - 5:00 PM	Board Workshop @ Board of Education, Teachers' Center, 500 Dusy Street
8/20/2012 - 5:00 PM	Regular Meeting @ Board of Education, Teachers' Center, 500 Dusy Street
9/10/2012 - 5:00 PM	Board Workshop @ Board of Education, Teachers' Center, 500 Dusy Street
9/17/2012 - 5:00 PM	Regular Meeting @ Board of Education, Teachers' Center, 500 Dusy Street
10/8/2012 - 5:00 PM	Board Workshop @ Board of Education, Teachers' Center, 500 Dusy Street
10/22/2012 - 5:00 PM	Regular Meeting @ Board of Education, Teachers' Center, 500 Dusy Street
11/5/2012 - 5:00 PM	Board Workshop @ Board of Education, Teachers' Center, 500 Dusy Street
11/26/2012 - 5:00 PM	Regular Meeting @ Board of Education, Teachers' Center, 500 Dusy Street
12/10/2012 - 5:00 PM	Board Workshop @ Board of Education, Teachers' Center, 500 Dusy Street
12/17/2012 - 5:00 PM	Regular Meeting @ Board of Education, Teachers' Center, 500 Dusy Street
1/14/2013 - 5:00 PM	Board Workshop @ Board of Education, Teachers' Center, 500 Dusy Street
1/28/2013 - 5:00 PM	Regular Meeting @ Board of Education, Teachers' Center, 500 Dusy Street
2/11/2013 - 5:00 PM	Board Workshop @ Board of Education, Teachers' Center, 500 Dusy Street
2/25/2013 - 5:00 PM	Regular Meeting @ Board of Education, Teachers' Center, 500 Dusy Street

Date & Time	Type & Location
3/11/2013 - 5:00 PM	Board Workshop @ Board of Education, Teachers' Center, 500 Dusy Street
3/18/2013 - 5:00 PM	Regular Meeting @ Board of Education, Teachers' Center, 500 Dusy Street
4/8/2013 - 5:00 PM	Board Workshop @ Board of Education, Teachers' Center, 500 Dusy Street
4/22/2013 - 5:00 PM	Regular Meeting @ Board of Education, Teachers' Center, 500 Dusy Street
5/13/2013 - 5:00 PM	Board Workshop @ Board of Education, Teachers' Center, 500 Dusy Street
5/20/2013 - 5:00 PM	Regular Meeting @ Board of Education, Teachers' Center, 500 Dusy Street
6/17/2013 - 5:00 PM	Regular Meeting @ Board of Education, Teachers' Center, 500 Dusy Street


**Adjournment**

Mr. Jimmy Addison made a motion seconded by Mr. Ben Armstrong to adjourn. The motion carried unanimously. Voting was as follows: "YEA" – Jones, Woodall, Addison, Guilford, Armstrong, Maddox. "NAY" – None. "ABSTAIN" – None.

The meeting adjourned at 6:32 p.m.

APPROVED: October 29, 2012

  
\_\_\_\_\_  
Dr. Harry Wayne Parrish, Chairman

  
\_\_\_\_\_  
Tim Wilder, Superintendent, Secretary